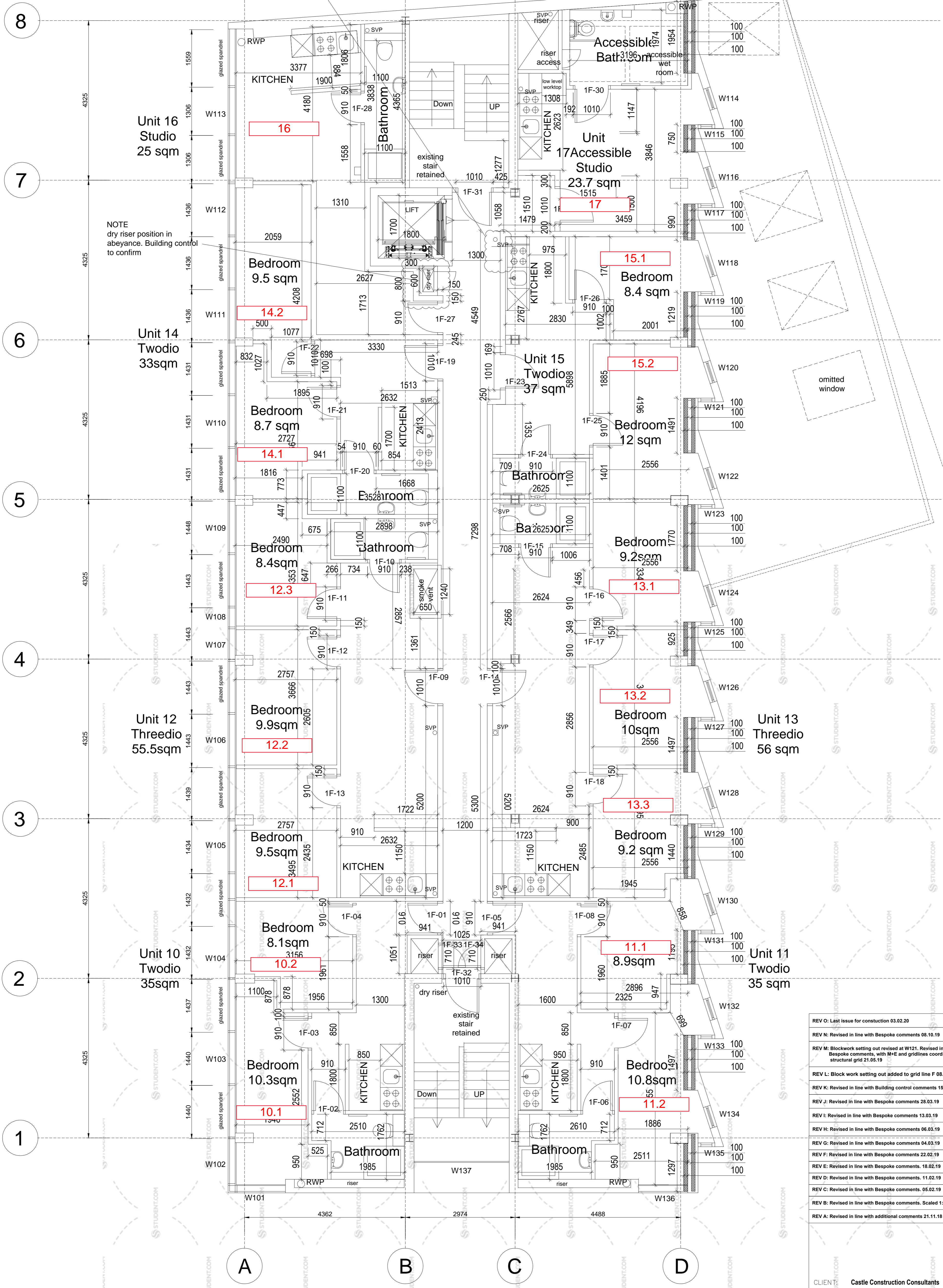


NOTE
SVP positions in abeyance to be reviewed



NOTE
dry riser position in
abeyance. Building control
to confirm

REV O: Last issue for construction 03.02.20
REV N: Revised in line with Bespoke comments 08.10.19
REV M: Blockwork setting out revised at W121. Revised in line with Bespoke comments, with M+E and gridlines coordinated with new structural grid 21.05.19
REV L: Block work setting out added to grid line F 08.05.19
REV K: Revised in line with Building control comments 15.04.19
REV J: Revised in line with Bespoke comments 28.03.19
REV I: Revised in line with Bespoke comments 13.03.19
REV H: Revised in line with Bespoke comments 06.03.19
REV G: Revised in line with Bespoke comments 04.03.19
REV F: Revised in line with Bespoke comments 22.02.19
REV E: Revised in line with Bespoke comments 18.02.19
REV D: Revised in line with Bespoke comments 11.02.19
REV C: Revised in line with Bespoke comments 05.02.19
REV B: Revised in line with Bespoke comments. Scaled 1:50. 30.01.19
REV A: Revised in line with additional comments 21.11.18

CLIENT:	Castle Construction Consultants
PROJECT:	Greyfriars Coventry
DWG TITLE:	Proposed first floor setting out
DATE:	01.11.18
DRAWN BY:	MLDGB
SCALE:	1:50
JOB NO:	1655
DWG NO:	606

Dimensions shown must be checked on site prior to manufacture by contractor. If bearing is not to be scaled from. Any discrepancy should be reported immediately to the designer. This drawing is not to be copied or disclosed to any third party without the consent of

